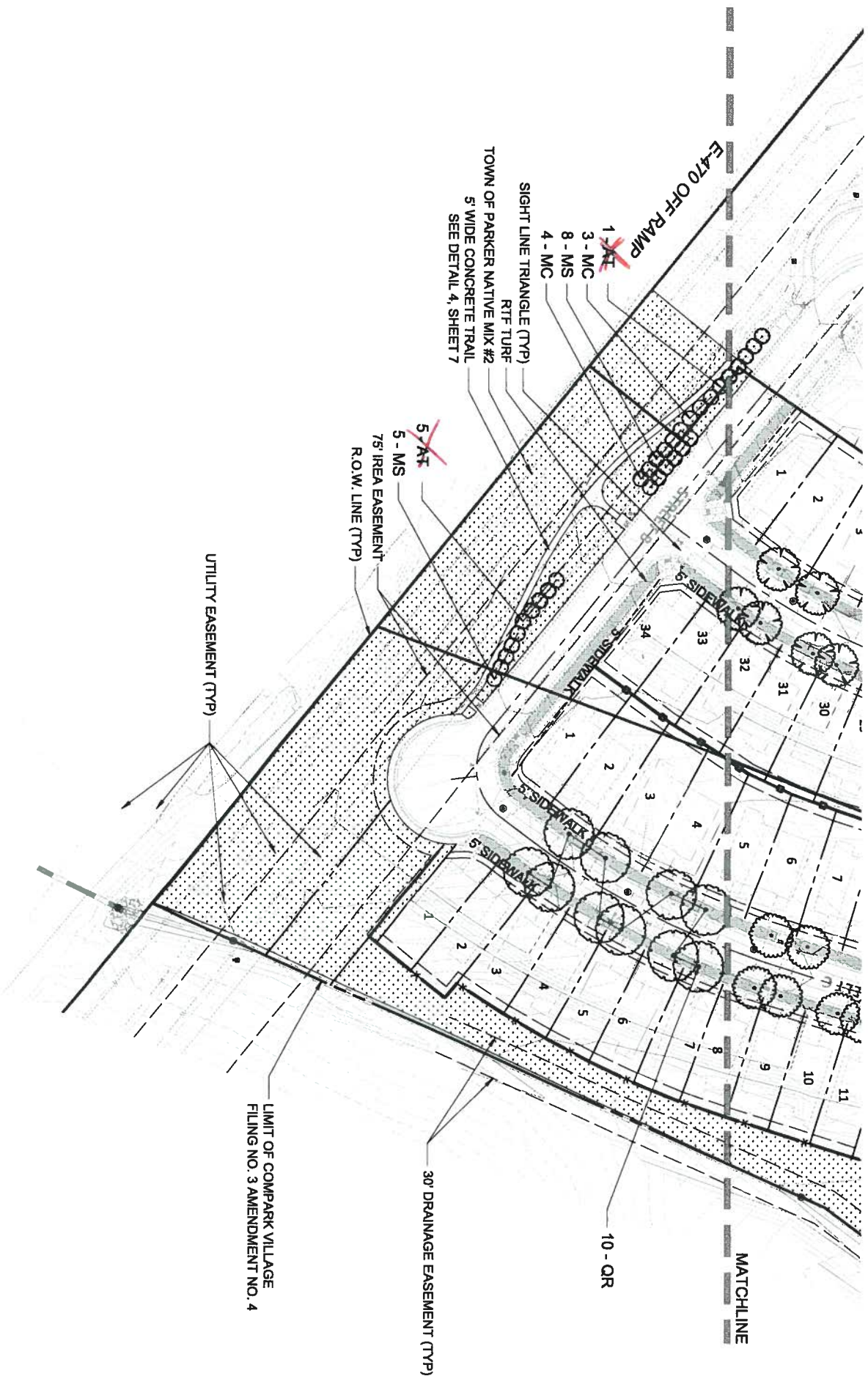


COMPARK VILLAGE FILING NO. 3 AMENDMENT NO. 4 FINAL LANDSCAPE PLAN

TRACT D, COMPARK VILLAGE FILING NO. 3, AMENDMENT NO. 3, LOCATED IN THE SOUTH HALF OF SECTION 5, TOWNSHIP 6 SOUTH, RANGE 66 WEST OF THE SIXTH PRINCIPAL MERIDIAN, TOWN OF PARKER, COUNTY OF DOUGLAS, STATE OF COLORADO
 PLANNING AREA 8 (COMPARK VILLAGE PD - 5TH AMENDMENT)
 PLANNING AREA 4 (COTTONWOOD HIGHLANDS - 4TH AMENDMENT)
 10.94 ACRES, 70 RESIDENTIAL DUPLEX UNITS



LEGEND

	SHADEMASTER HONEY LOCUST (GT)
	RED OAK (OR)
	COMMON HACKBERRY (CO)
	SWAMP WHITE OAK (OB)
	SARGENT CRABAPPLE (MS)
	CORALBURST CRABAPPLE (MC)
	HOT WINGS TATARIAN MAPLE (AT)
	AUSTRIAN BLACK PINE (PN)
	RTF TURF
	TOWN OF PARKER NATIVE MIX #2

Handwritten notes:
 Not Tree Approved (with star symbol)
 OK
 OK
 10-15 mature
 25' mature - Tina Dwarf
 15'-18' mature as shrub

COMPARK VILLAGE FILING NO. 3 AMENDMENT NO. 4 LANDSCAPE PLAN

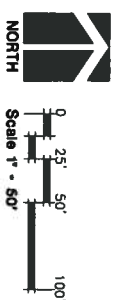
OWNER
 Compark Land Company
 280 Fillmore Street, Nw, 2A
 Denver, CO 80204

LANDSCAPE ARCHITECT
 PlanWest
 787 Santa Fe Drive
 Denver, CO 80204
 (303) 741-1411

ENGINEER
 Mainland Consulting
 8008 E. Arapahoe Ct, Suite 110
 Centennial, CO 80112
 (303) 551-5219

Town of Parker, Colorado
 job no. 2016-02
 date 03-03-2017
 REVISIONS

Sheet 4 of 9



THE REPRESENTATION OF ANY OF THE INFORMATION CONTAINED HEREIN IS FOR THE CONVEYANCE OF INFORMATION ONLY AND DOES NOT CONSTITUTE A WARRANTY OR GUARANTEE OF ANY KIND. THE USER OF THIS INFORMATION SHALL BE RESPONSIBLE FOR OBTAINING ALL NECESSARY PERMITS AND APPROVALS FROM THE APPROPRIATE AGENCIES.

PLANNING | SITE DESIGN | LANDSCAPE ARCHITECTURE | ENTITLEMENTS
 787 Santa Fe Drive
 Denver, CO 80204
 (303) 741-1411
 planwest.com



All of our inventory is for sale only at our nursery located in Longmont, Colorado. We are not shipping plants at this time.

[Supplies](#)

[Garden](#)

[Services](#)

[Info](#)

[More](#)

[Home](#) / [Maple, Hot Wings® Tatarian](#)

SPRING SALE LIST!

JOBS...NOW HIRING

Located North Of Denver
I-25 Exit 235 ...Then 5 Miles West
Near Longmont, Colorado

Winter Hours End March 19 2017

SPRING HOURS BEGIN

Sunday March 19, 2017

OPEN SUNDAYS 10-4

OPEN MON-SAT

8-6

ALL HOURS ARE

WEATHER PERMITTING

COME SEE!

[Buy Gift Cards Online](#)



[14 Day WeatherFor You.com](#)

[NOAA Weather Forecast](#)

[Colorado Doppler Radar](#)



Save 20% >>>
with Retail Volume Discounts



© 2013 All Rights Reserved

EXTRA SPECIAL DEALS!

Email Address



Click on Image to zoom in.

MORE VIEWS



Hot Wings Tatarian Maple

Acer tataricum 'GarAnn' PP 15023

[Be the first to review this product](#)

NOT APPROVED
IREA

[Share This](#)

[Print This Page](#)

Product Description

A Very Reliable Tree For Harsh Conditions! Showy red samaras (winged seeds) shine in bright contrast to the summer foliage of this small tree that is an excellent performer in rugged climates. Broadly oval when young, its branches spread wider than tall, becoming rounded at maturity. Hot Wings Maple has proven to be much more tolerant of high pH soils than other maples. Nice fall colors ranging from yellow to orange-red. VERY WATER THRIFTY! Hardy to -40°F
Maximum Elevation: 7,000 ft.

[Additional Information](#) [Product's Review](#)

Description	A Very Reliable Tree For Harsh Conditions! Showy red samaras (winged seeds) shine in bright contrast to the summer foliage of this small tree that is an excellent performer in rugged climates. Broadly oval when young, its branches spread wider than tall, becoming rounded at maturity. Hot Wings Maple has proven to be much more tolerant of high pH soils than other maples. Nice fall colors ranging from yellow to orange-red. VERY WATER THRIFTY! Hardy to -40°F Maximum Elevation: 7,000 ft.
Deciduous Tree Type	Ornamental Tree
Tree Habit	Spreading, Oval
Mature Size (generic)	TREE (20-30' Tall) • Average Width
Fall Color	Dramatic
Features	Grown For Attractive Foliage
USDA Hardiness Zone	3, 4, 5, 6, 7
Water Needs	Moderate
Growth Rate	Moderate
Light Needs	Filtered Sun, Partial Sun, Full Sun
Mature Height	20-25 Feet
Mature Width	20-25 Feet
Name	Hot Wings Tatarian Maple

All of our inventory is for sale only at our nursery located in Longmont, Colorado. We are not shipping plants at this time.

[Supplies](#)

[Garden](#)

[Services](#)

[Info](#)

[More](#)

[Home](#) / [Crabapple, Coralburst®](#)

[Maple, Hot Wings® Tatarian](#)

SPRING SALE LIST!

JOBS...NOW HIRING

**Located North Of Denver
I-25 Exit 235...Then 5 Miles West
Near Longmont, Colorado**

Winter Hours End March 19 2017

SPRING HOURS BEGIN

Sunday March 19, 2017

OPEN SUNDAYS 10-4

OPEN MON-SAT

8-6

ALL HOURS ARE

WEATHER PERMITTING

COME SEE!

[Buy Gift Cards Online](#)



[14 Day WeatherFor You.com](#)

[NOAA Weather Forecast](#)

[Colorado Doppler Radar](#)



Save 20% >>>
with Retail Volume Discounts



© 2013 All Rights Reserved



Coralburst® Crabapple

Malus 'Coralcole'

[Be the first to review this product](#)

[Share This](#)

[Print This Page](#)

Product Description

A small, uniform grower with a compact, rounded crown. Ruby-red buds open into semi-double, pink blossoms and are followed by reddish-orange fruit. Hardy to -30°F
Maximum Elevation: 7,000 ft.

Click on Image to zoom in.

MORE VIEWS



[Additional Information](#) [Product's Review](#)

Description	A small, uniform grower with a compact, rounded crown. Ruby-red buds open into semi-double, pink blossoms and are followed by reddish-orange fruit. Hardy to -30°F Maximum Elevation: 7,000 ft.
Deciduous Tree Type	Flowering Tree
Tree Habit	Round, Dense Branching
Mature Size (generic)	TREE (10-20' Tall) • Broad Canopy
Fall Color	None
Features	Showy Flowers
Flowering Season	Spring
USDA Hardiness Zone	4, 5, 6, 7
Water Needs	Moderate
Growth Rate	Slow
Light Needs	Full Sun
Mature Height	10-15 ft. <i>OK</i>
Mature Width	10-15 ft.
Name	Coralburst® Crabapple

[Supplies](#)

[Garden](#)

[Services](#)

[Info](#)

[More](#)

[Home](#) / [Crabapple, Sargent Tina](#)

[Crabapple, Coralburst®](#)

[Maple, Hot Wings® Tatarian](#)

SPRING SALE LIST!

JOBS...NOW HIRING

**Located North Of Denver
I-25 Exit 235 ...Then 5 Miles West
Near Longmont, Colorado**

Winter Hours End March 19 2017

SPRING HOURS BEGIN

Sunday March 19, 2017

OPEN SUNDAYS 10-4

OPEN MON-SAT

8-6

ALL HOURS ARE

WEATHER PERMITTING

COME SEE!

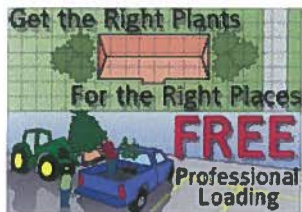
[Buy Gift Cards Online](#)



[14 Day WeatherFor You.com](#)

[NOAA Weather Forecast](#)

[Colorado Doppler Radar](#)



Save 20% >>>
with Retail Volume Discounts



© 2013 All Rights Reserved



Sargent Tina Dwarf Flowering Crabapple

Malus sargentii 'Tina'

[Be the first to review this product](#)

[Share This](#)

[Print This Page](#)

Click on Image to zoom in.

MORE VIEWS



Product Description

Dark pink buds open to single white flowers with yellow centers. Tiny, ornamental, red fruit stays on the tree into winter providing food for wildlife. Wide spreading habit.

Hardy to -30°F

Maximum Elevation: 7,500 ft.

[Additional Information](#)

[Product's Review](#)

Description	Dark pink buds open to single white flowers with yellow centers. Tiny, ornamental, red fruit stays on the tree into winter providing food for wildlife. Wide spreading habit. Hardy to -30°F Maximum Elevation: 7,500 ft.
Deciduous Tree Type	Flowering Tree
Tree Habit	Patio Tree, Spreading
Mature Size (generic)	TREE (5-10' Tall) • Wide Spread
Fall Color	Dramatic
Features	Showy Flowers
Flowering Season	Spring
USDA Hardiness Zone	4, 5, 6, 7
Water Needs	Moderate
Growth Rate	Slow
Light Needs	Partial Sun, Full Sun
Mature Height	6-8 ft.
Mature Width	8-10 ft. <i>OK</i>
Name	Sargent Tina Dwarf Flowering Crabapple
Flower Color Group	White